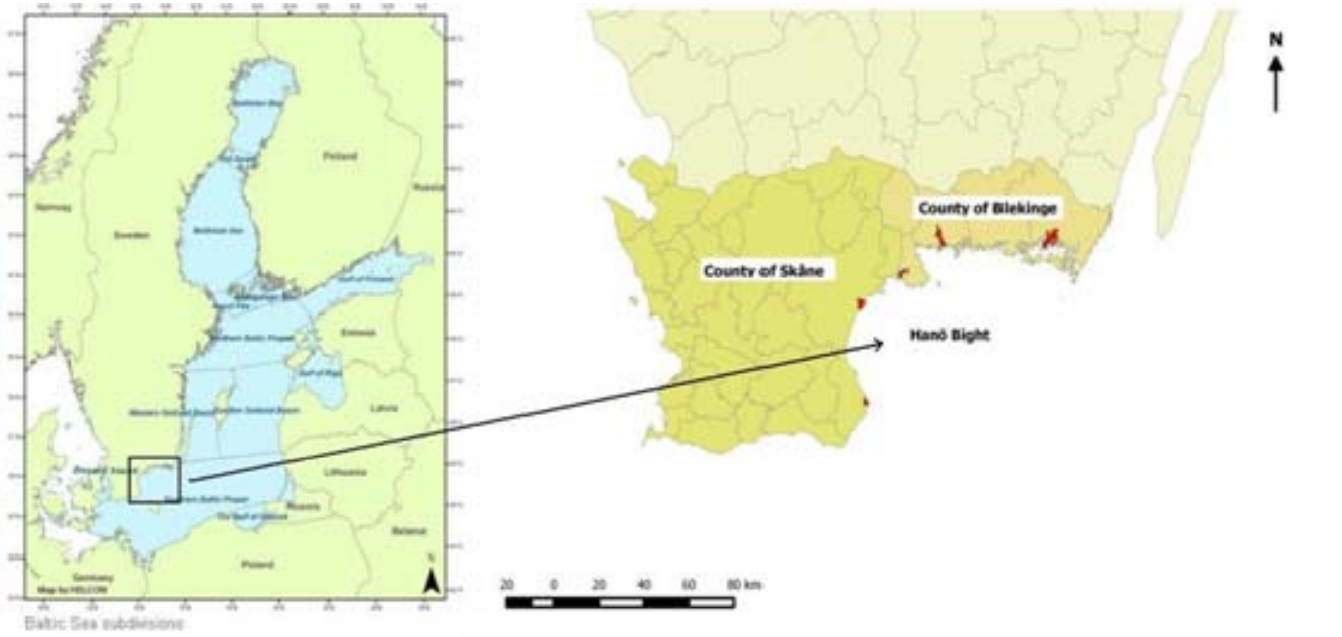


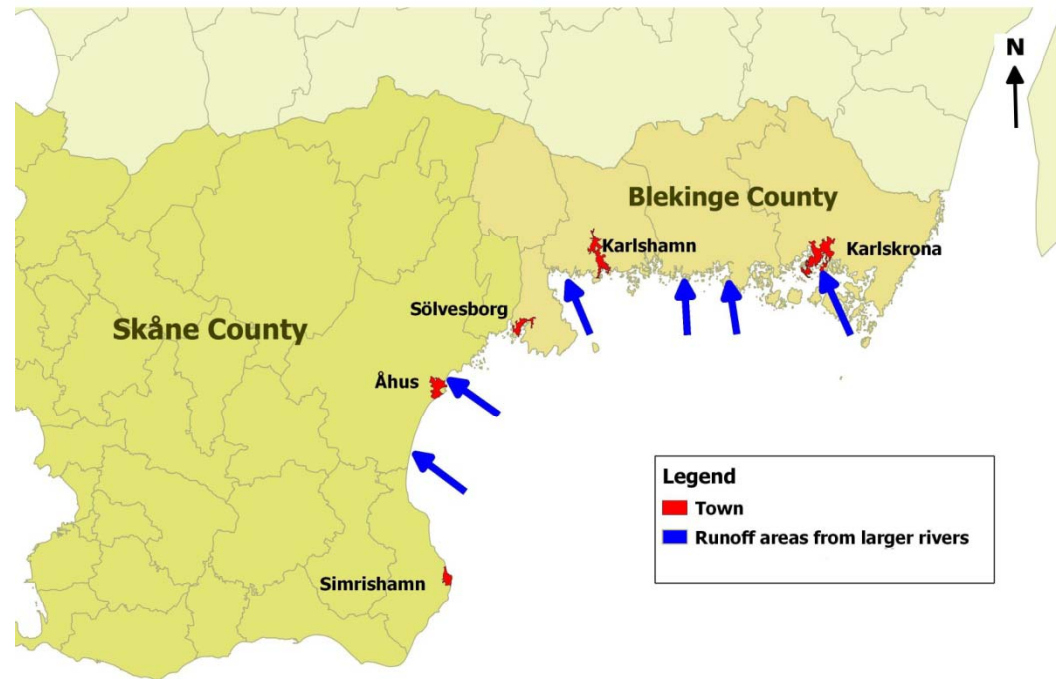
Swedish Case Study Area

Blekinge Archipelago and Skåne



Hanö Bay

- 200 km coastline
- 2 bordering counties
- 7 bordering municipalities
- Large drainage area
- Weak permanent current in general southern direction
- Currents are often wind induced
- Uppwelling occurs when the wind is coming from south and southwest
- Good oxygen levels

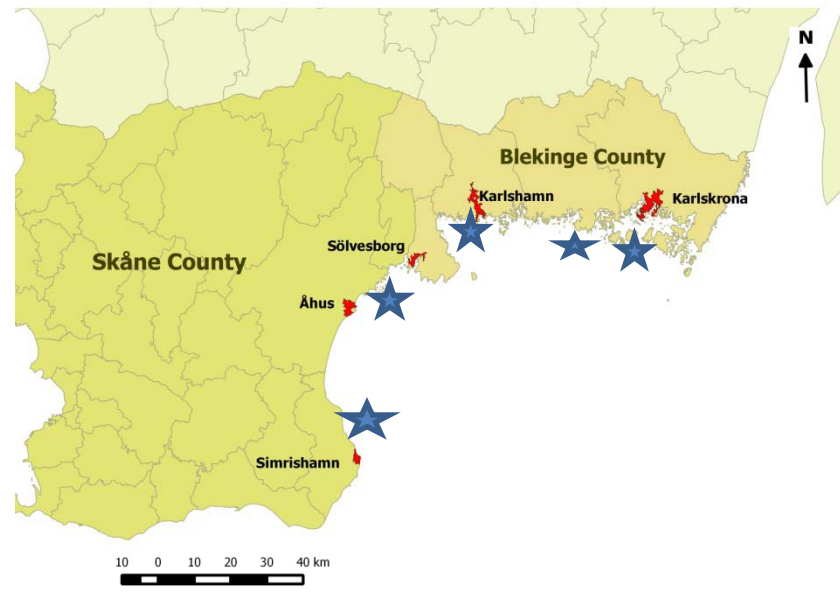


Hanö bay - Sea bed

Hard substrate



Vegetation: Red algae (*Furcellaria lumbricalis*)

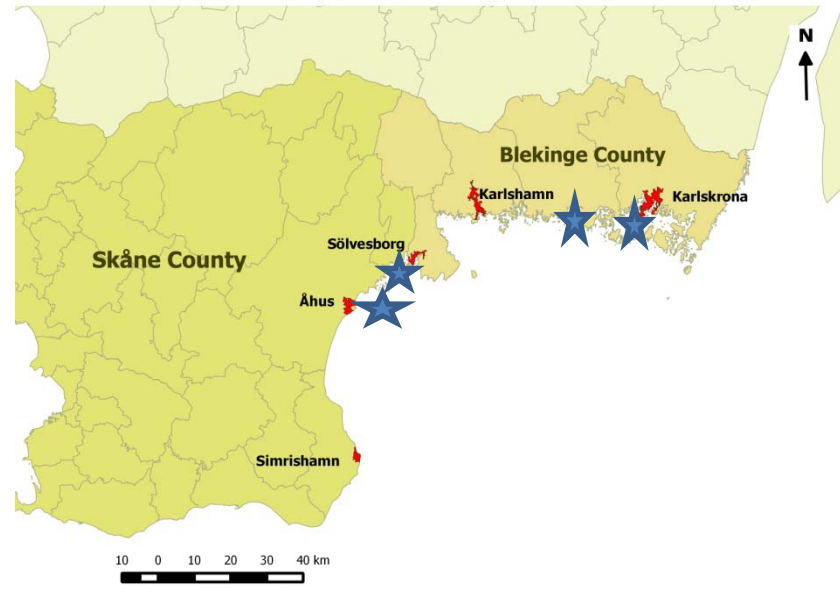


Hanö Bay -Sea bed

Soft substrate (sand)



Vegetation: Eelgrass (*Zostera marina*)

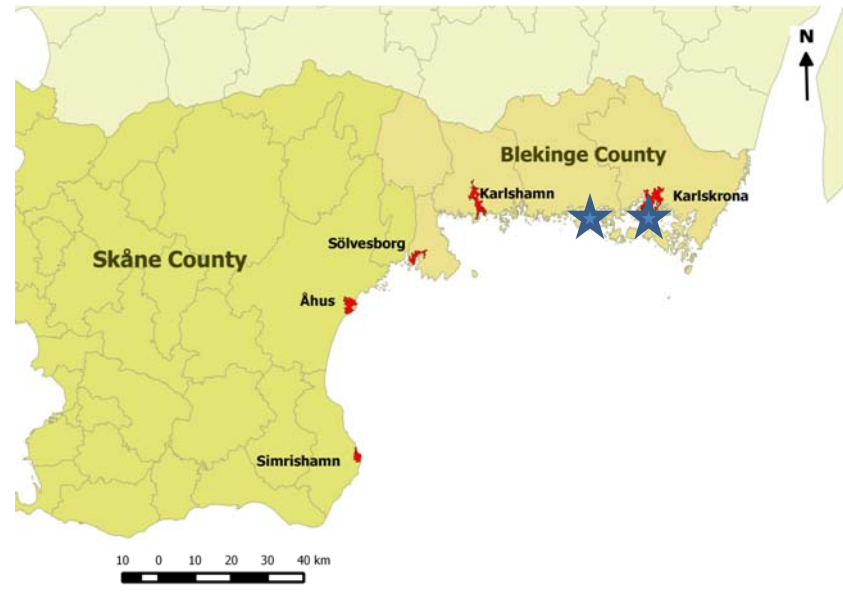


Hanö Bay – Sea bed

Soft substrate (silt)

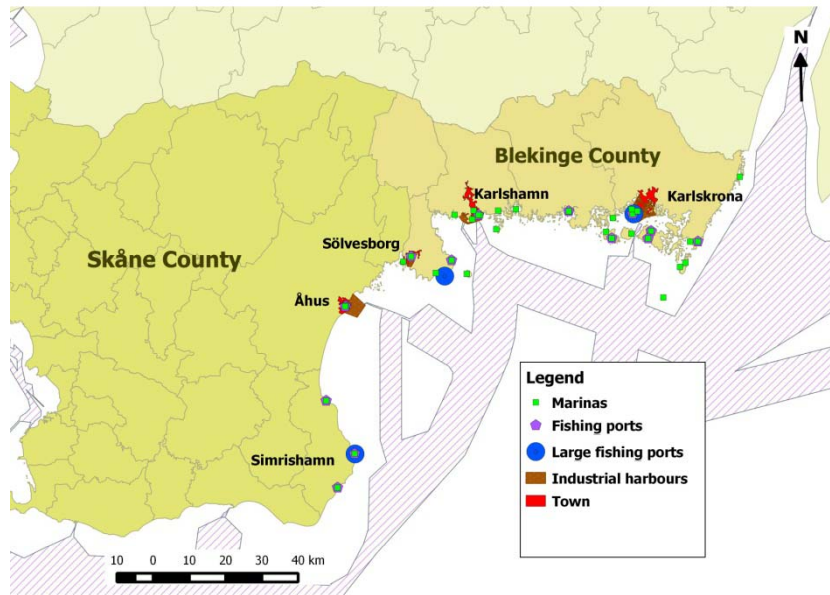


Vegetation: Widgeongrass (*Ruppia* sp.)

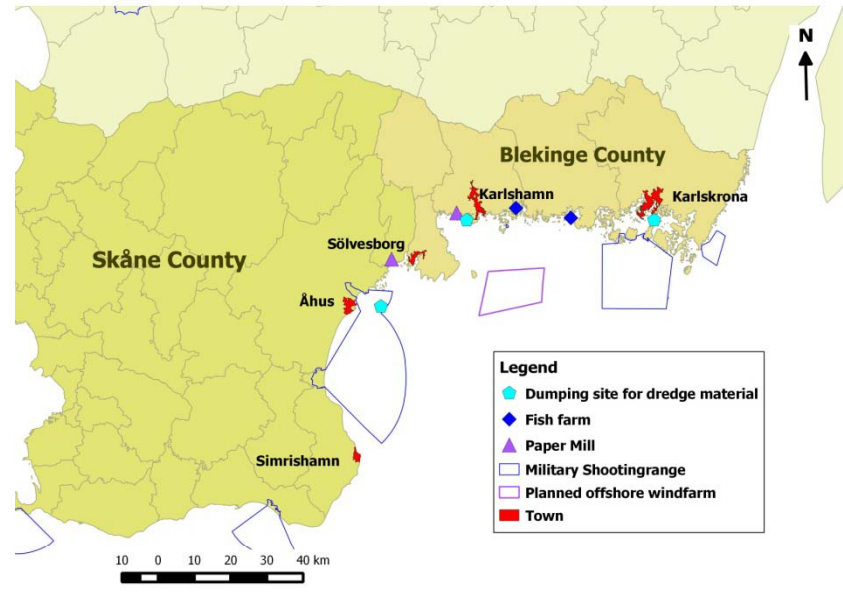


Human activities

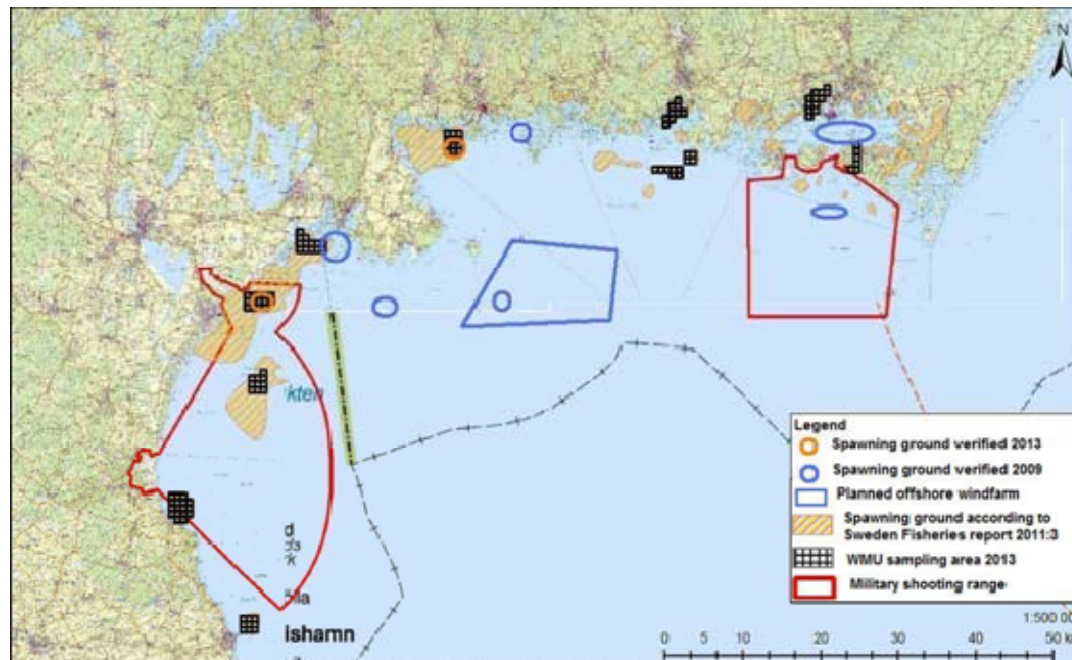
Various harbours



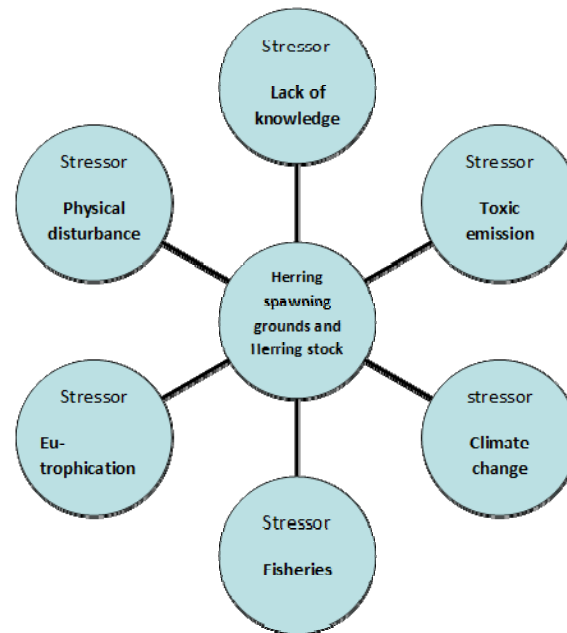
Other human activity



Spawning areas



Stressors - negative impact



Challenges/Gaps

- Location of spawning areas not fully identified
- Monitoring of herring spawning not part of any monitoring programme or framework
- Current national and regional monitoring not enough geographical coverage
- Better understanding of link between well managed coastal natural resources and local socio-economic development

Thank you!

